



Northwold Road, London, E5

BUTLER  STAG



A fantastic, two double bedroom apartment forming part of a modern development in an up and coming area of E5, benefitting from communal gardens and a private patio.



- Two Double Bedrooms
- Close To Transport Links
- Communal Gardens
- Recently Decorated
- Kitchen/ Diner
- Private Balcony
- Available 1st December
- Walking Distance to Shops and Amenities.

A fantastic, two double bedroom apartment forming part of a modern development in an up and coming area of E5. Spaciously arranged over the ground floor, accommodation comprises of a large reception room, kitchen/diner, modern bathroom and two double bedrooms. Additional benefits include off street parking, private patio and access to a large secluded communal garden.

There is within walking distance a plethora of shops, and cafes with access to transport links into all major areas of London and a short stroll to the vibrant hackney Central.





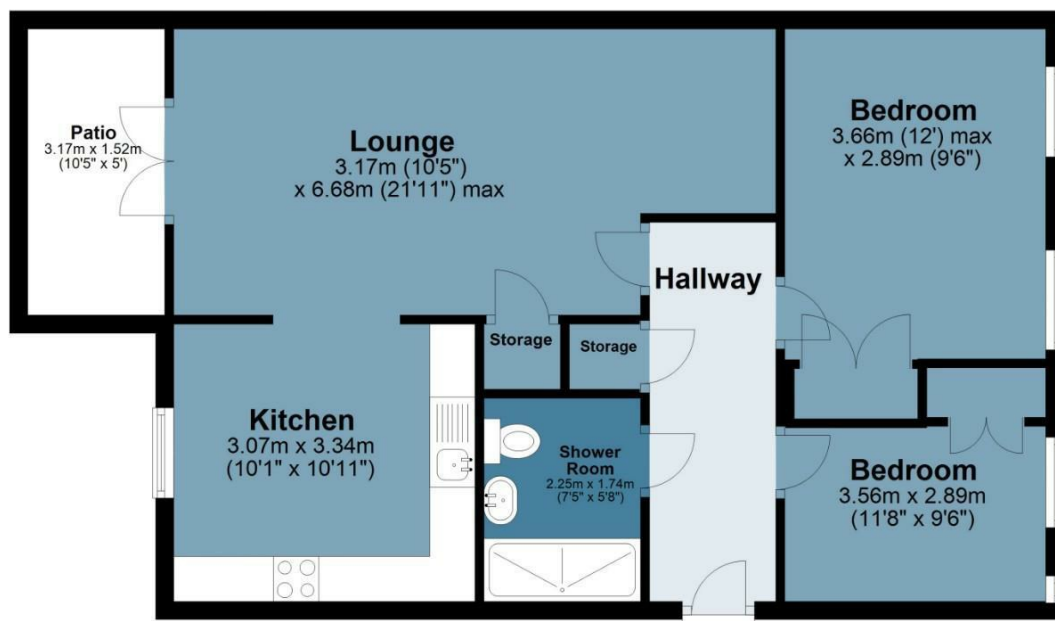
Northwold Road

Approx. Gross Internal Area 69.3 Sq M (745.9 Sq Ft)

BUTLER & STAG

Ground Floor

Approx. 69.3 sq. metres (745.9 sq. feet)



Measurements are approximate and for illustration purposes only. While we do not doubt the accuracy and completeness, we advise you conduct a careful independent assessment of the property to determine monetary value.
© @modephoto.uk www.modephoto.co.uk

IMPORTANT NOTICE - These particulars have been prepared in good faith and they are not intended to constitute part of an offer or contract. We have not performed a structural survey on this property and the services, appliances and specific fittings have not been tested. All photographs, measurements, floor plans and distances referred to are given as a guide and should not be relied upon.

BUTLER & STAG

☎ 020 8102 1236

🏠 508 Roman Road, Bow, London, E3 5LU

✉ bow@butlerandstag.com

www.butlerandstag.uk